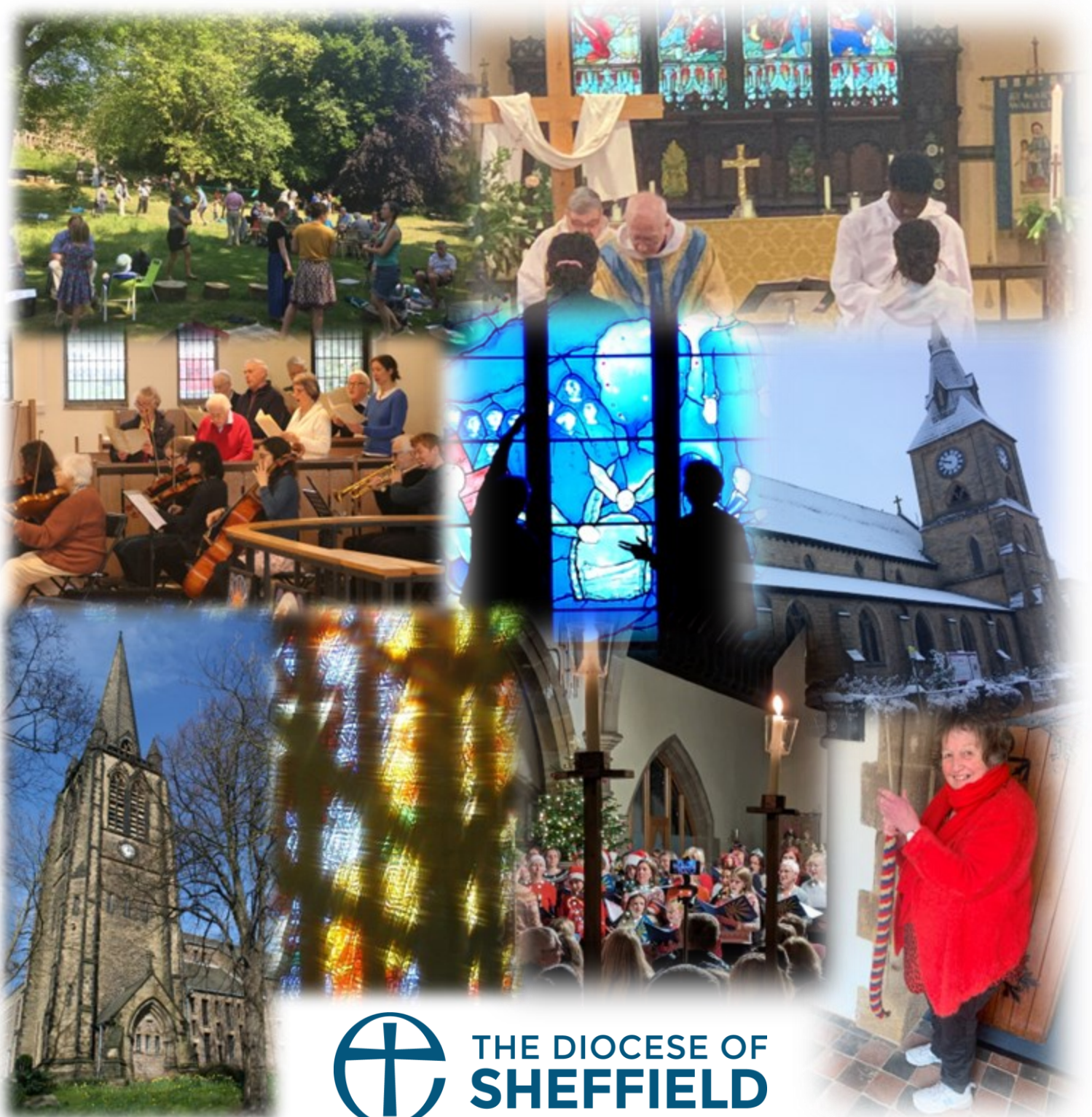


Parish Profile



**St Mark's
Broomhill**

**St Mary's
Walkley**



**THE DIOCESE OF
SHEFFIELD**

Welcome to St Mark's and St Mary's

Welcome to our parish profile and thank you for taking time to read about our churches.

We hope that it gives you an insight into both churches that describes an exciting opportunity for you as we embark on a new chapter in the lives of our parishes.

We are delighted to be welcoming a new Oversight Minister to St Mary's and St Mark's and pray that you will help our congregations and communities to be nurtured and enjoy their experience of church based on faith, the Holy Spirit and a love of God.

Who are we looking for?

St Mark's

At St Mark's we are looking for someone to support and grow our belief to practise a living, thinking, loving, faith.

To do this we seek an incumbent that has a sense of humour with a warm personality to welcome and support people exploring Christianity for the first time or others that have attended church regularly and to do this with integrity, energy and drive.

St Mark's needs a Vicar who is experienced in preaching in the liberal critical tradition and has an understanding of the bible and the contexts that influenced the format of the canons of scripture. We seek to appoint someone who can challenge and lead a large, diverse and articulate congregation. They will require a wide-ranging knowledge of written theological and spiritual resources whilst being proactive in stimulating questions.

As we look to support the work with our children, families, students and young people our new minister will be someone who recognises the importance of these ministries in the life of our church.

To promote a living faith, we need someone who affirms inclusivity, appreciates diversity and sees God in everyone.

Being a welcoming church, we need someone who values everyone and understands the importance of listening to and acknowledging the different voices within our congregation and the wider community by being kind, caring and mindful of our pastoral needs.

St Mary's

At St Mary's we are looking for an enabler who works well with strong, self-supporting lay and clergy teams. This person will be someone who will encourage participation, nurture new lay involvement, respecting the existing culture and theology, but support and challenge us to be the best we can be.

Our new Priest in Charge will have a strong commitment to developing the existing inclusive environment within the church and Mission Area, including, but not limited to, LGBTQI+, ethnicity, age, neurodiversity and all abilities. They will have a good understanding of the role of the parish church and a willingness to learn what that means in Walkley, building on existing connections and partnerships.

Our Priest in Charge will be comfortable within the inclusive Catholic nature and ethos of the church, with a strong eucharistic/sacramental focus and an appreciation of the richness of Christian musical tradition.

They will value the occasional offices for their community links and missional value in Walkley, demonstrating the skills to build community relationships and disciple new and existing Christians, with a particular focus on those with no church background, or those who find refuge here. They will be unafraid of a questioning faith, open to discussion, a broad range of views and have a commitment to life-long learning. They will also contribute to pastoral support and develop lay ministry in this area.

Our Priest in Charge will be able to offer support and drive in the following key areas we want to develop: Enquirers group and confirmations; pastoral care; enabling work with children and young people on our current direction of travel; supporting funding opportunities to develop the work of the church.

Our shared Oversight minister will celebrate the differences between the churches and their parishes, work within these, and apportion time appropriately. They should have a good liturgical presence with balanced delivery and be a confident, succinct preacher. We want them to be grounded in the real world with good organisational and people skills and with a sense of humour.



The Bishops' Letter

There is no denying it: these are challenging times in the Diocese of Sheffield. But by the same token, these are exciting times for us. No-one has any doubt that in 2029 the Church of England in South Yorkshire and the East Riding will look very different from the way it is now — but equally no-one is yet very clear about the shape it will take. Our plan is an ambitious one and we are hungry for change. We are asking tough questions. Will the whole people of God be mobilised for the whole mission of God? What will morale be like, among key lay and ordained leaders? Will attendance figures be in decline or growing? Will there be more stipendiary incumbents or fewer? Will there be more congregations or fewer? Will we raise up a dynamic community of 'Lights for Christ'? Will we grow a praying community of 2025 by 2025? These questions were already pressing ones for us before the present pandemic: they will surely be even more urgent for us now.

In this context, the appointment of a new 'Oversight Minister' for the parishes of Broomhill and Walkley in the Three Spires Mission Area in the deanery of Hallam (twinned with the deanery of Ecclesfield) is therefore all the more important. The communities of faith in the parishes of Broomhill and Walkley (where this ministry will be most focused) are profoundly realistic about the missional challenges they face but are equally excited about the huge opportunities open to them within their diverse communities. We share their longing to see the church of Christ flourish here – with every person who is baptized confident to shine as a light for Christ in the world to the glory of God the Father.

In this Gospel adventure for the sake of the coming kingdom of God, the leadership of this Church family is going to be vital. It will require someone who is able to exercise an enabling oversight, with a passion for teamwork, for developing leaders and for empowering the whole people of God for the whole mission of God. It will require someone able to raise up leaders to take on responsibilities as 'focal leaders' in every congregation and someone who understands that overseeing the ministry of the body of Christ does not mean doing everything personally but releasing the gifts and ministries of others.

We are praying that the Lord will bring to us a person with a strong sense of vocation to this task at this time; a person of faith and hope and love in God; a person who laughs easily and has a zest for life in Christ; a person with a sense of adventure, unafraid of failure and reliant on the grace of the Holy Spirit. If that might be you, we would love to explore with you the possibility that the Lord is calling you to this role.

With every blessing

+ Peter Sheffield

The Rt Revd Dr Pete Wilcox
Bishop of Sheffield



+ Sophie Doncaster

The Rt Revd Sophie Jelley
Bishop of Doncaster



Table of Contents

Welcome to St Mark's and St Mary's	1
The Bishops' Letter.....	2
Our Vision.....	3
Our Parishes.....	4
Map of Broomhill: St Mark and Walkley: St Mary	6
Our Worship.....	7
Community Outreach and Social Justice	9
Our Children, Young People and Students	12
Learning and Growing.....	14
Our Churches	15
St John's Ranmoor and the wider Mission Area	18
The Vicarage	19

Our Vision

St Mark's

St Mark's vision is to practise a **living, thinking, loving, faith**.

We are committed to being rooted in the teachings of Jesus of Nazareth and celebrating diversity in the community of Christ.

We celebrate the wonderful diversity of human life, believing that Jesus revealed God's love to all people.

We believe that Jesus came that we might have life in all its fullness (John 10.10) and we encourage people to join in with God's work of transformation and hope wherever they are.

We prepare services with care which are recognisably Anglican whilst weaving in contemporary and creative expressions of prayer.

St Mark's is affiliated to Inclusive Church and we are committed to fostering a spirit of openness and generosity.

St Mark's PCC, clergy, licensed ministers, and congregations are predominantly in favour of St Mark's affirming same-sex commitments.

In January 2024 the PCC unanimously resolved to affirm the use of Prayers and Love and Faith as currently authorised within existing acts of worship, and to move to use them within stand-alone services as soon as the option becomes available. Further explanation of [Our Vision](#).



St Mary's

St Mary's vision is to be **The Church on the Road: Inclusive, Eucharistic, a safe place to be with God.**

We offer an Inclusive place of hospitality for all those on life's journey.

We are all travellers on the road who gather together in the thanksgiving of the Eucharist, seeking a place of encounter with God and food for the journey.

We keep this safe space to be with God so that anybody may come, some to visit, some to stay, all called by God to this Church on the road.



Our Parishes

St Mark's

Sheffield is well known as the city of villages that merged together as urbanisation took hold. Within the parish of St Mark's, Broomhill and Broomhall are suburbs to the west of Sheffield city centre and are distinct communities with their own local identity. The vast diversity within Sheffield is very much represented across these two areas.

Broomhill is an attractive, leafy suburb. The area is influenced by the neighbouring University of Sheffield and Sheffield Teaching Hospital Trust sites. The Royal Hallamshire Hospital estate and the Medical School both face the grounds of St Mark's Church. Broomhill includes a range of shops, cafes and restaurants, and a library.

Broomhall is a mixed area which includes the Collegiate Crescent Campus of Sheffield Hallam University. It has a multi-ethnic population including a large Somali community. The Broomhall Centre provides a home to a large range of groups and activities including English for Speakers of Other Languages courses, youth clubs, cultural groups and a foodbank. Parts of this location face a variety of social problems.

The church building and vicarage are within walking distance of the Broomhill shopping centre, which has excellent bus links with the city centre. St Mark's is also close to some of Sheffield's green spaces. The vicarage is a short walk from the beautiful Botanical Gardens and is also in walking distance of Weston Park and Endcliffe Park.

Both Broomhill and Broomhall have a mix of long term and short-term residents living in a wide range of housing, including multi-occupancy housing and social housing. There is also a wide age range, from older people to families with young children, single people, young professionals and students.



There is a wide variety of ethnicity and many different languages are heard in local schools. 24.9% of the population in the Broomhill and Sharrowvale Ward is BME.

Because of the high student population primarily in Broomhill, the population of the parish varies substantially between term time and vacation. Some students also make their home in the area throughout the year.

There are several hospitals within the parish boundary:

- Royal Hallamshire Hospital – a general hospital with minor injuries unit
- Weston Park Hospital – a specialist cancer hospital
- Sheffield Children’s Hospital
- The Jessop Wing – maternity and women’s services
- Charles Clifford Dental Hospital

The parish contains both primary and secondary schools:

- Broomhill Infants School
- Westbourne School
- Birkdale School
- King Edward VII School
- Sheffield High School for Girls



St Mary’s

The population of the Parish of St Mary’s Walkley is estimated at around 6,500 although numbers vary due to the transient nature of the community.

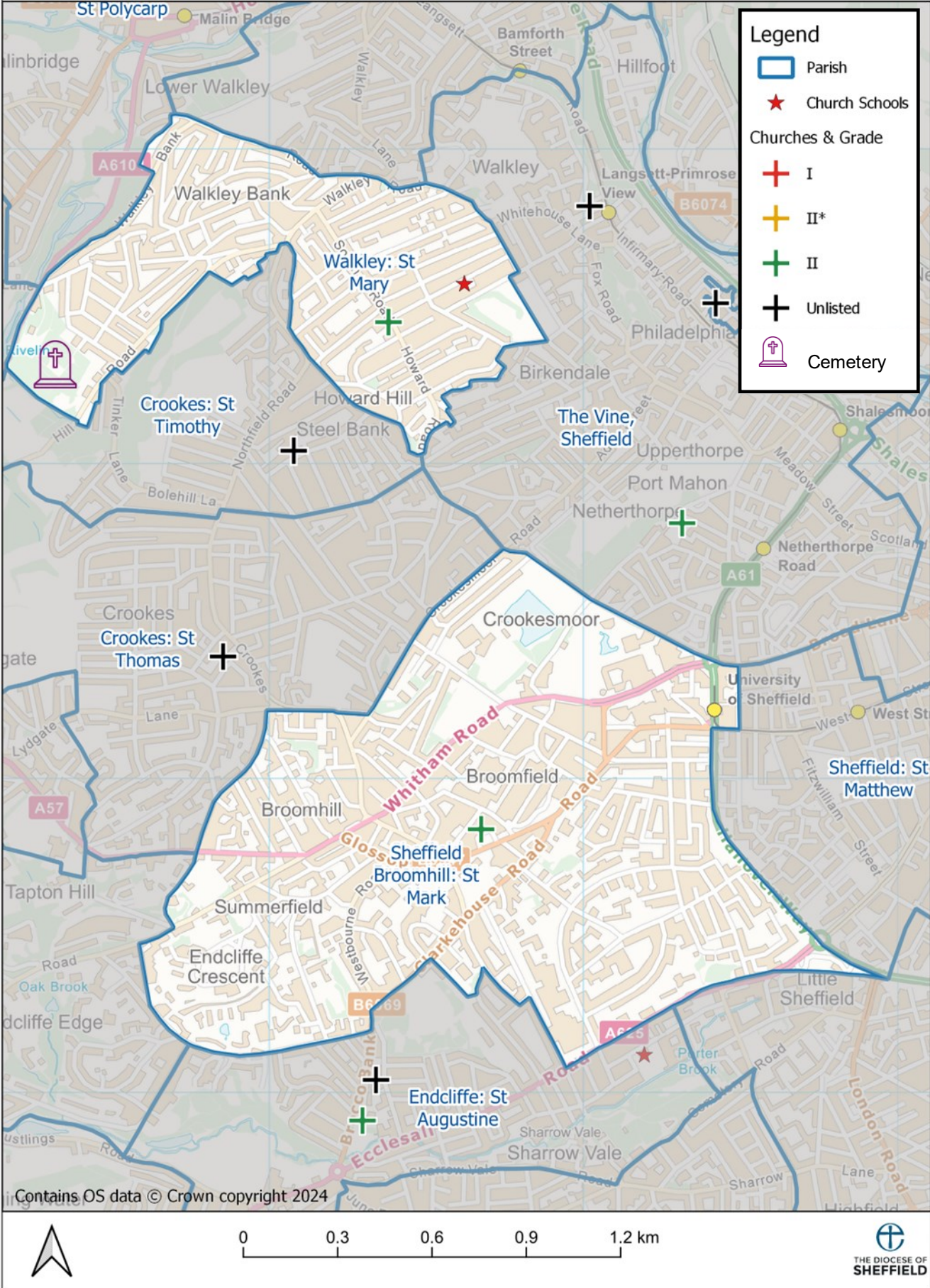
Housing tenure is mixed, divided between social housing (20%), privately rented accommodation (30%) and owner occupiers (50%, many of whom are first time buyers). The privately rented sector is on the increase, which has increased the population turnover and the ethnic diversity in the area. Those in social housing are more likely to be longer term residents and census statistics show that the elderly are significantly poorer than the rest of the community.

Increasingly Walkley is home to young professional first-time buyers, many connected to the nearby university and hospitals, who stay a few years until the small Victorian terraces become too small for their growing families. This results in the population profile being skewed towards the 25-45 age group and their young children. The parish contains an above average number of supported housing schemes, accommodating people with disabilities.

There are two primary schools within the parish, St Mary’s CE Academy and Walkley Primary. The main road in Walkley, South Road, has a number of independent shops and businesses, several restaurants and cafes and other community facilities such as the volunteer run [Walkley Carnegie Library](#). A well-used [community centre](#) and Methodist church in process of suspending Sunday worship are also present. Walkley is served by the 95-bus route to the city centre and Meadowhall shopping centre.



Map of Broomhill: St Mark and Walkley: St Mary



Our Worship

St Mark's

St Mark's main Sunday service is a Eucharist at 10am in the church building and on Zoom. This includes groups for children and teenagers, and sung worship with our choir. The Director of music has a policy of inviting and including anyone who wants to be involved in music making with singing and instruments.

At 8am on the second and fourth Sunday of the month we hold a service of Holy Communion using the Book of Common Prayer which takes place in the Chapel.

Night Service is held every Sunday evening at 7pm. This act of worship uses silence, music, readings and prayer to create a space to be in the presence of God and follows a regular pattern of Communion, conversation and night prayer, Taizé, a themed service and a service of Healing and Wholeness.

On Thursday at noon, we meet on Zoom for a simple service using Northumbria community liturgy.

St Mark's host Open Communion once a month for people who identify as LGBTQ+, their families and friends. This service is organised by Open Sheffield.

Prayer takes places on Zoom at 9am and 5pm Monday to Friday.

Attendance and additional services from 2023 Statistics for Mission

Sunday service - adults	140
Sunday service - children	25
Easter day and Easter Eve Vigil	215
Special services during Advent	577
Christmas Eve and Day	378
Baptisms	7
Marriages	2
Funeral in church and non-church location	5
Committal service or burial of ashes	2

Worship is facilitated by a team that includes our Associate Vicar and Liberal Theologian, Assistant Priest, Children's and families worker, Director of Music and two licensed Readers, and is supported by members of the congregation including a retired Priest with Permission to Officiate and lay and ordained Chaplains.

There is a wide group from the congregation that volunteer with welcome groups, reading, intercessory prayer and flower arranging.

To support St Mark's vision and pattern of worship we are looking for someone who is eucharistic, sacramental, spiritual, vibrant and creative.



St Mary's

Worship at St Mary's centres around the weekly celebration of the Eucharist and offers food for the journey and a place of encounter with God. The Sunday morning offering is supplemented with additional services during certain seasons and celebrating specific festivals. Our services are livestreamed on [YouTube](#), with orders of service available on our [website](#).

There is comprehensive lay involvement in these services, with a variety of different roles for people across the generations working together as a team. We use the full range of seasonal Common Worship liturgical texts and the NRSV translation of the Bible. Our worship is structured, but relaxed, with a strong sense of liturgical movement, colour and symbolism.

Our singing is a mix of classic and contemporary hymns, thoughtful worship songs and a cantor led mass setting. A non-audition singing group enhances our worship at festivals. Singing is supported by piano, temporary electric organ and occasionally, other acoustic instruments.

We have seen an increase in average Sunday attendance, growing more diverse in both age and ethnicity, and have been focused on ensuring those on our worship rotas represent the breadth of the congregation.

Detailed worship planning is undertaken by the Worship Group subcommittee of PCC, which includes three Readers (one of whom is also our primary musician) and an Assistant Churchwarden. St Mary's shares resources with both St Mark's and St John's. Our Priest in Charge, or a member of the team at St Marks, presides on the 1st Sunday of the month. The Associate Priest, or Curate at St John's, presides on the 3rd Sunday. On the 2nd, 4th and 5th Sundays one of the retired clergy at St Mary's presides. Preaching is shared between all the clergy and the four Readers licensed to St Mary's.

Looking ahead we seek to hold a more regular Taizé Prayer, to build upon our strong lay participation and ensure our space is fit for modern liturgical use.

In early 2024 the PCC resolved to affirm the use of Prayers and Love and Faith as currently authorised within existing acts of worship, and to move to use them within stand-alone services as soon as the option becomes available.



Attendance and additional services from 2023 Statistics for Mission

Sunday service - adults	34
Sunday service - children	6
Easter day and Easter Eve Vigil	64
Special services during Advent	444
Christmas Eve and Day	78
Baptisms	3
Marriages	1
Funeral in church and non-church location	1
Committal service or burial of ashes	1



Community Outreach and Social Justice

St Mark's

It is important for us to continue to focus on how we serve the wider community. We want to continue to find ways of supporting people seeking asylum.

St Mark's offers a wide range of activities and an inviting building, with a variety of spaces and facilities available for hire.

Pastoral care takes many forms and is carried out within the church building, in people's homes and in our local community.



Serving Our Local Community

The Lunch and Friendship Club held in the ground floor lounge provides a warm, friendly "social" environment for people to enjoy meeting with one another, listening to talks and music, playing games and quizzes, singing and joining in with celebrations. The club serves between 20 and 30 meals on around 40 weeks of the year.

The Craft group meets on the first Saturday morning of the month in the ground floor lounge doing an activity whilst chatting over refreshments. Recently the group has made blankets and shawls for both care homes and use in church. They have also worked alongside the Environment group to make six tapestries depicting the days of Creation.

A separate group coordinate and send cards to mark significant life events.

Lay and ordained individuals offer home communion and care home services and communion for those in our parish who are sick and unable to get to church.



Serving Our Wider Community

Within Sheffield, St Mark's contributes and supports a variety of initiatives.

The Faith and Justice group are responsible for "Home Donations" and following research and networking allocate 5% of St Mark's income to different charities to promote social justice and well-being to tackle need in Sheffield as well as climate change.

St Mark's bought a two bedroomed flat in Sheffield and continues to lease it to Roundabout, a local youth housing charity providing shelter, support and life skills to young people aged 16-25 who are homeless or at risk of homelessness.

A group of people from within and outside of St Mark's congregation organise a weekend Soup Run that makes and distributes food and warm drinks to the homeless and socially marginalised in Sheffield city centre.

We recognise that our congregation is predominantly white and well educated and are seeking ways to make our church an inviting place that embodies the gospel's call for radical inclusivity.

Serving Our Worldwide Community

St Mark's International Donations group meet and agree how best to direct 5% of St Mark's income to charities with overseas projects using good governance and respect for St Mark's ethos of inclusivity.



The group fund raises through the sale of cards, preserves, Nepalese goods, Christian Aid week activities, church lunches and Christmas carol singing.

Communication with Our Community

We keep our communities informed of what is happening at St Mark's using our website and that is kept up to date with new information and events. During the last year the communication group carried out a large piece of work to overhaul the website to enhance our communication and information sharing.

We have notice boards inside the church to advertise events in a hard copy format and give notices during the Sunday morning service.

Mark's Messenger, a parish magazine, is a valued part of St Mark's mission and ministry. Four editions a year are produced by volunteers offering articles on a variety of topics predominantly written by members of our own community. From the 100 people that receive it by email or post, 90% are congregational members.

St Mark's uses Facebook and WhatsApp groups to connect with our local and wider communities.

St Mary's

The Hall and Rooms

St Mary's Walkley Community Hall is a well-used, physically contiguous four room complex and a central part of our community outreach. It has been open for 30 years and is an increasingly popular community venue in Walkley. In 2023 there were over 20 groups or individuals making regular hall bookings in addition to between 20 and 30 one-off bookings. The hall provides space for exercise classes, music, education, cultural events, creativity and the arts, celebrations of key life events and a Polling Station.

In addition to the traditional bookings the hall hosts important community events. This includes the Walkley Horticultural Show and an Art Show during the Walkley Festival. As a new venture, the Walkley Festival team are holding a series of events throughout the year, hosted in both church and hall. The first, the Walkley Christmas Markets in December 2023, saw over 1200 people through the doors to browse 30 local makers stalls, listen to live music and enjoy good food and drinks. There are four more market events planned for this year, beginning with [Art in the Aisles](#) in May.

The hall bookings and these events build upon strong links with the community, drawing in and welcoming those who would never otherwise enter the building. They raise the profile of St Mary's and enable us to seek the good of the city in which we live.



Alongside its community outreach potential, through bookings and other uses, the hall provides a versatile space for St Mary's to host activities. These might be a Saturday coffee morning, a Bellingers Supper and Quiz or a Saturday fundraising event put on by church volunteers.

We are in the process of agreeing a plan for the hall's refurbishment and renewal. This would improve accessibility and usability as well reducing the hall's environmental impact. Whilst running the hall is demanding in terms of time, it is managed by a PCC subcommittee and much of the day-to-day operation is undertaken by our Parish Administrator.

Bellringing

The tower at St Mary's has six bells, restored in 2007. They are often rung after the morning service, before evening services, with quarter peals on special occasions. There are strong links with the Sheffield Universities' Guild of Change Ringers and a diversity of ages represented in the tower.



Cemetery

St Mary's has an open cemetery located within the parish, but at some distance from the church, on the slopes of the Rivelin Valley. There are burials only in existing graves and the site is home to 43 war graves. A small but dedicated Friends group has been working to record the graves and manage vegetation for 20 years on behalf of and supported by the PCC. The site is popular with walkers and wildlife enthusiasts. Our aim is to manage the site sustainably with advice from the [Sheffield Wildlife Trust](#) and [Caring for God's Acre](#).



Social Justice

Social justice at St Mary's is furthered in several ways. Some Saturday morning events raise money for charities including Macmillan Cancer Support, Christian Aid and Transform Trade. Collections at certain services are for specific charities e.g. Christingle service for The Children's Society and Service of Remembrance for the Royal British Legion. St Mary's regularly supports the S6 Foodbank. PCC sets aside £600 each year to be split between charities, normally in receipt of donations are a local charity, an environmental charity, a young person's charity, and an international charity. Overall, in 2023 around £2,800 were raised or donated to charities.

St Mary's has recently been awarded an [A Rocha Bronze Eco Church Award](#). Many of the congregation are thoughtful about the impact of their lifestyle on the planet and it is expected we will work towards the silver award in due course. St Mary's is supportive of the objectives of [Inclusive Church](#) and aims to work towards joining soon.

Our Children, Young People and Students

St Mark's

St Mark's ministry with children, young people and students is a vital part of the church's mission and one that we look to continue to support and grow.

There are over 30 families registered for St Mark's provision which represents in excess of 20% as a proportion of the overall congregation.

These activities are arranged and supported by our Children and Families worker and a fantastic group of volunteers that meet on a Sunday.



Groups & Activities

Creche is offered to 0-5 year olds twice a month alongside Godly Play with between six and twelve attending each session. The priority is for both children and parents to feel safe, happy and welcome.

Godly Play gives children aged 4-11 the opportunity to join in with activities in their own sacred space. More recently we have seen larger numbers of children than ever before with a record number of 18 in the group.

Our teenage group, the Lions, meet on the first Sunday of the month to become more familiar with the Bible and use these stories to explore issues in daily life.

Gathering on the Green is usually on the second Sunday of the month with families enjoying the outside space. Services are developed around different themes that involve a reading, chat, an activity, snack and music.

On the remaining Sundays we offer a range of provision from All-Age worship to Family Sessions so that children can be active participants supporting the liturgy through signing, singing and instrumental accompaniment.

The Young Adults' group is an important community for students and young adults at St Mark's meeting fortnightly during university terms. Recently the group has studied different styles of prayer. During the spring semester the group are exploring the historical context and formation of the bible, as well as different approaches to scripture and theology. This group is looking forward to being supported and growing as a group over the next year.

To support our aims, we would like our Oversight Minister to help St Mark's to forge new relationships and strengthen links with the wider community of Broomhall and Broomhill, the schools in the local area, students and young people.





St Mary's

St Mary's has a space available in the main worship area where younger children can play under the supervision of a parent or carer. This enables the whole of the worshipping community to participate together and has been particularly appreciated where only one parent/carer attends church.

We encourage children from older primary age to adulthood to participate in the service as they feel comfortable. Opportunities available include bringing forward the elements at the offertory, carrying candles at the Gospel procession, reading, serving and singing. We are looking to add the delivery of set intercessions at festivals to this list.

Until recently, we have not had the resources, to run formal children's groups. We are now working towards providing alternative provision for young children. This would initially take place once a month, using [Diddy Disciples](#) resources, during the first half of the service, with children and leaders returning at the Peace.

Post COVID the number of children and young people regularly attending services has increased. Our aim for work with children and young people over the next couple of years is to explore funding opportunities to support paid provision, which could include some Sunday mornings, midweek and work with the school. Alongside this we will continue to encourage children and young people to be full participants in the worshipping life of the church.

St Mary's CE Academy

[St Mary's CE Academy](#) is part of the Diocese of Sheffield Academy Trust ([DSAT](#)) and is a single form entry, Ofsted rated Good, school. Links with the church have been good and are currently maintained by the Associate Priest and a lay member of PCC, who are both members of the Local School Board (formerly Governors).

The whole school has special services in church four times a year, at Harvest, Christmas, Easter and a summer leavers' service. Attendance at these services by friends and families of children has increased in the last 12 months. The church is exploring offering hospitality before the service starts. Some individual classes also attend occasionally to learn about the church. Several of the children newly attending church also attend St Mary's School.



Learning and Growing

St Mark's

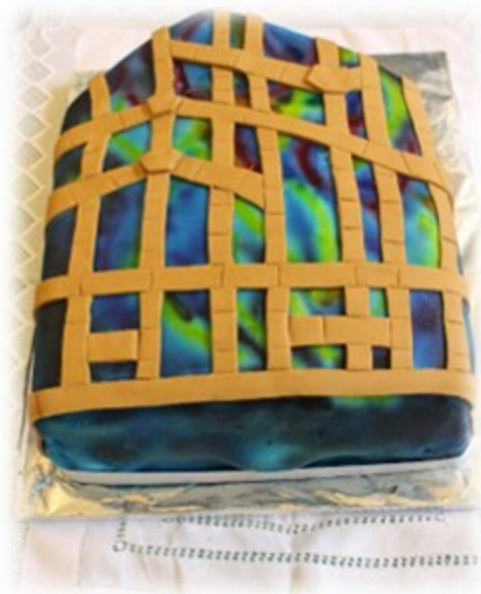
St Mark's takes seriously its commitment to Jesus' commandment to love God 'with all your mind', as well as with the heart, soul and strength. In our congregation are many who really enjoy thinking about our faith, and how it relates to thorny contemporary issues. Indeed, some have come to us from other churches which they have experienced as tending to restrict their capacity to question, argue, and doubt. Preachers can expect robust discussion after the service, as well as thanks – people definitely listen and think independently.



For St Marks, the challenge is to ensure that we keep our heads and our hearts together, and that in our love for God, the life of the mind is fully integrated with the devotion of the heart, the purpose of the soul and the practical activism of the body.

During the past year the Study and Learning Group has taken on various projects to support theological learning both at St Mark's and further afield.

Faithful Living – the group developed this project seeking to produce short pieces about an open and questioning approach to Christian basics and ethics and now exploring if these can be made into short films.



Lent Course – Over 60 people from St Mark's and St Mary's joined 6 groups on zoom and face to face using material from Miranda Threfall-Holmes book "How to Eat Bread" and exploring nourishing ways to read the Bible after Miranda came to St Mark's to give a seminar on her book.

Seminars and Events – During the past year St Mark's has also hosted Dr Marika Rose, Theology for the End of the World and Love Lead Us, a conference on LGBTQ+ inclusion and safeguarding.

Logos - To help our exploration and study we run LOGOS, an online monthly Bible study group.

There is an opportunity to build up the membership of the Study and Learning group as people have moved on to ordination training and "retire" from old roles.

Online and physical libraries – these host theological, spiritual and liturgical resources. We are thankful to the library group that promotes their use and supports a church with a Living,

Thinking, Loving, Faith.

St Mary's

St Mary's has a long history of theological learning with a number of Readers trained in the parish, the most recent licensed in February 2021. Our Lent Groups have been shared with St Mark's for the last four years, which has been a good example of the partnership working within the Mission Area. Part of our side chapel is in the process of being set aside as a resource library for the use of the congregation.

We are aware that we haven't been able to resource the discipleship of new Christians and enquirers since the retirement of our last full time Vicar (March 2020). This is an important area of future work where we would value input from our Priest in Charge.

Our Churches

St Mark's

History

St Mark's Church is a designated major church, an outstanding example of modern church architecture and a Grade 2 listed building. Nothing but the spire and south porch of the original church, designed by W.H. Crossland and consecrated in 1871, survived an incendiary bomb in 1940.



Moves to rebuild the church were set in train in 1948 when the PCC appointed George Pace, a leading postwar ecclesiastical architect, to draw up designs. St Mark's was eventually reopened in 1963. The Diamond Anniversary celebrations took place throughout 2023. There is no other Anglican place of worship in the parish.

As well as the main body of the church, the building includes:

- A Chapel. This is a flexible, airy space which is used for the 8am Sunday service, weekday services, meditation, prayer groups and private prayer. Reserved sacrament and consecrated oils are kept in the aumbry in the chapel.
- A Church Lounge which is adjacent to the main body of the church. This provides a large kitchen area, meeting space and storage space.
- A secure Vestry.
- The Upper Room is a large, versatile space with a small kitchen. It can be divided into two parts by a sliding partition.
- The Church Office is used to house relevant equipment and is a workspace for the Operations Co-ordinator. At the end of the Upper corridor, the "Den" is a workspace for the Children and Families Worker.
- The Green – this is a great outside space that hosts both the church and wider community activities.

The Lounge and Upper Room are extensively used by the congregation and room hirers. The main body of the church is also hired for events including conferences and is a very popular concert venue enjoying fantastic acoustics and a wonderful organ. All areas of the church are fully accessible. Facilities include a lift to the upper rooms, a car park including disabled parking spaces, and accessible and gender-neutral toilets on both floors.

As part of St Mark's commitment to the Eco Church initiative, triple glazing has been installed to the low-level main church windows.

The church building is open to visitors Mondays, Wednesdays, Thursdays and Fridays 1-5pm, as well as for service times.

Environment

At St Mark's we believe that the climate and biodiversity emergency is a spiritual issue that affects our life, our neighbours, and creation. We think about the environment in the liturgies we use and in our prayers and sermons.

St Mark's achieved an Eco Gold award in 2023 thanks to the dedication and hard work of a small group over a long period of time that understood the importance of appropriate action. As Christians we have a duty and an obligation to recognise our calling to value and protect God's beautiful planet.

St Mark's Environmental group is now commissioned to support and help other churches and the group are working with the Diocesan Environmental Officer and with [A Rocha](#).

The group also has further plans for 2024 which will include our local and wider communities including a church picnic to mark Great Big Green Week in June and, with a general election coming,

supporting the Better Buses campaign on both environmental and social justice grounds. September sees our annual climate service but care for the earth, love of nature and lament for the damage we are causing have become an intrinsic part of our worship.

Electoral roll

There are currently 178 people on the electoral roll, of whom 37 (19%) are resident in the parish.

Paid Staff

Other than our Associate Vicar & Liberal Theologian, St Mark's employs five paid staff: Our Director of Music for 14 hours a week, Our Operations Coordinator for 20 hours a week, Our Children and Families Worker for 25 hours a week, Our Cleaner for 12 hours a week and Our Caretaker for 13 hours a week.

Governance

The PCC meets 10 times a year and comprises 12 members including the PCC Secretary, plus the Assistant Vicar & Liberal Theologian and Assistant Priest.

The PCC is supported by a Standing Committee and a broad range of working groups: CHYPS – Children, Young People and Students, Communications, Fabric & Finance, Hospitality & Pastoral Care, Study & Learning and Worship & Prayer.

Finances

St Mark's is a generous church in a good financial position; income and expenditure generally match. The majority (80%) of our income of about £240k pa comes from our 125 or so regular donors. Almost all of this is paid via the Parish Giving Scheme or Standing Orders. Similar amounts of around £11k (5%) come from each of room hire, car park hire and investment income. Smaller amounts of around £5k from solar panels and the property let out to Roundabout.

We have been fortunate over the last few years to receive a number of generous legacies. These have funded several projects, including the social property previously mentioned and an investment fund. These now produce an important income stream.

As with many churches most of our donations come from a minority of donors; for us 70% of our donations are from 30% of the donors. The majority of these generous donors are retired. A challenge is to try to spread the financial load more widely.

The most recent [annual report and accounts](#) are available on our website.



St Mary's

History

St Mary's was built between 1863 and 1869 at a time of rapid expansion in Walkley due to the Industrial Revolution, and the growth of small artisan craftworks in Sheffield. The urban village of Walkley replaced a hillside of farms, scrubland and coppices. To celebrate the 150th anniversary of the church in 2019 a new contemporary stained glass west window, by Mark Angus, was installed.

St Mary's school, originally built next to the church in 1871, now occupies a bigger site on Cundy Street. The old school building is currently a spiritualist church and Yoga Centre.

Facilities

In addition to the main body of the church there is a side chapel, vestry and unenclosed office area within the Narthex. There are [four rooms](#) in the hall which are well utilised. The fabric at St Mary's is in a reasonably sound condition. The church side aisle roofs are in need of refurbishment and we are in the process of finalising a thorough plan of renewal for the hall with some reordering of the church.

People

There are currently 66 people on the electoral roll.

St Mary's has one paid staff member, a 10 hour a week Parish Administrator, whose role is focused around parish administration, communications and the day to day operation of the hall. They are line managed by the Churchwarden.

All other work is undertaken by volunteers.

Governance

The PCC meets every two months and has 11 lay members, the Priest in Charge and Associate Priest. The Standing Committee meets every 4-6 weeks and includes the Priest in Charge, the Wardens team, the Lay Vice-Chair of PCC/Treasurer and the PSO. The Priest in Charge chairs both of these meetings and the agendas are set by Standing Committee.

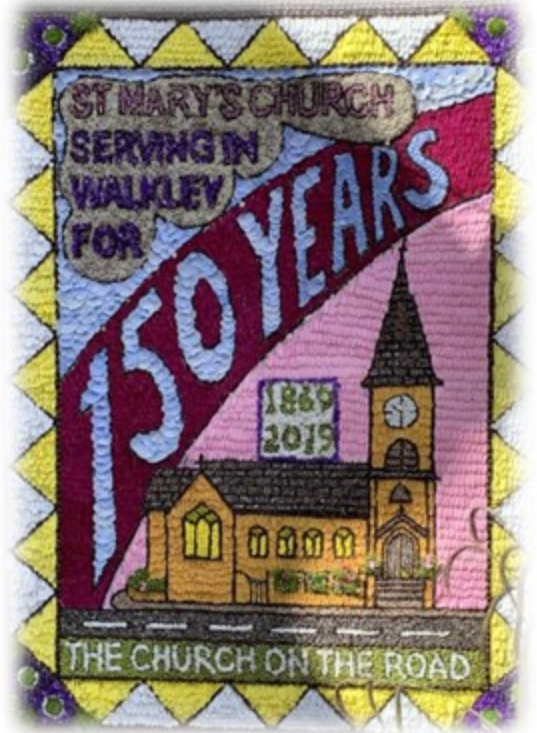
The following are subcommittees of PCC: Worship; Fabric; Hall; Communications; Leadership; Events and Fundraising; Social Action and Charitable Giving.

Finances

The day-to-day finances at St Mary's are in good health. In 2023 the General Fund had a surplus of £9,857 on income of £50,977. The majority of giving (80%-90%) is tax efficient, either through Gift Aid or the GASDS. We have some historic reserves to draw upon if needed.

The income from our hall and rooms is designated by the PCC towards the maintenance and planned renewal of the fabric. In 2023 the surplus was £3,923 on income of £15,355.

We have recently started using new finance software, Liberty Accounts, which is used by St Mark's. Their treasurer has supported our new treasurer in use of this software. This has been an area of cooperation between the churches. A programme of grant applications and fundraising will be needed to realise the fabric refurbishment plans for the hall and church.





St John's Ranmoor and the wider Mission Area

The third Church of 'The Three Spires Mission Area' (designated H2a) is St John's Ranmoor, which has a full time Oversight Minister, Matthew Rhodes who is also Area Dean of Hallam deanery.

Ranmoor lies to the east of Broomhill, along the Fulwood Road. St John's is a prominent church with a strong choral and liturgical tradition. It shares a liberal theology and Eucharistic worship with St Mark's and St Mary's. Like St Mark's, St John's is part of the Inclusive Church network and is also a silver Eco Church. Members of St Mark's and St John's meet for morning prayer every Tuesday and Thursday and we have occasional joint services. All three churches also work on areas of common concern, such as dementia.

Matthew, the Vicar of St John's, is also Associate Priest at St Mary's Walkley. He and Alison, the Curate at St John's take one or two Sunday morning services at St Mary's each month. Matthew also attends St Mary's PCC. He is a member of the School Board at St Mary's School and leads school services in the church. He is also involved with the building committee at St Mary's as well as Walkley Cemetery.

Each of the three churches in the Mission Area brings their own unique gifts and strengths. While wishing to preserve their individual identities, all three are enriched by our growing partnership and ability to work together.



The Vicarage

St Mark's Vicarage, the property designated for this appointment, is a substantial detached home adjacent to St Mark's Church. There is ample parking on the driveway, a double garage, outhouses for storage and pleasant gardens to front and rear.



St Mark's Vicarage, from St Mark's Green

